

# COLLIN COUNTY

## Still First in Growth

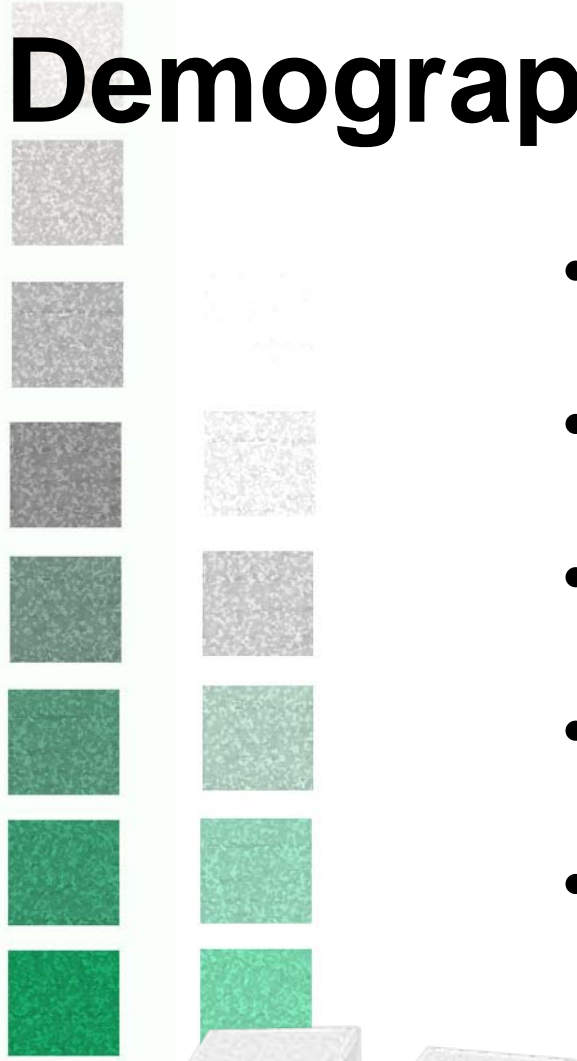
2009 STATE OF THE  
**C** **COMMUNITY**  
McKINNEY • TEXAS

Presented by:  
**Keith Self**  
County Judge

SUSTAINABILITY

# Demographics

- 33.7 years median age
- 30% 18 years old or younger
- 7% 65 years old and over
- 50/50 split for males vs. females
- 73% of households are families
  - 61% traditional married-couple families
  - Average family size: 3.3 members
- 90%/10% Urban to Rural ratio



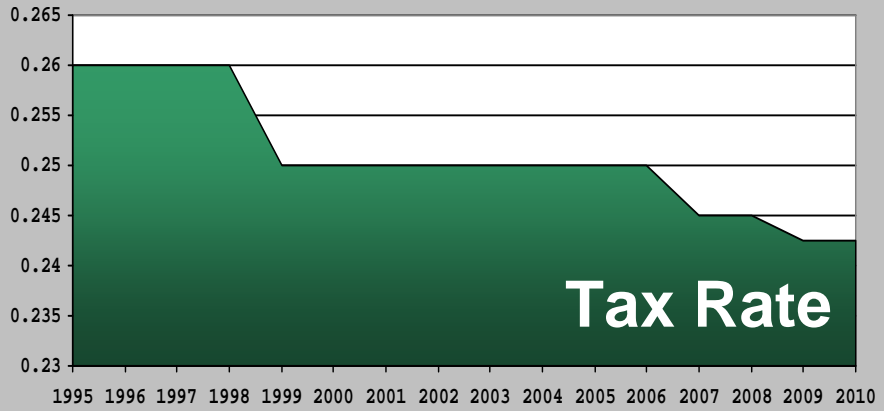
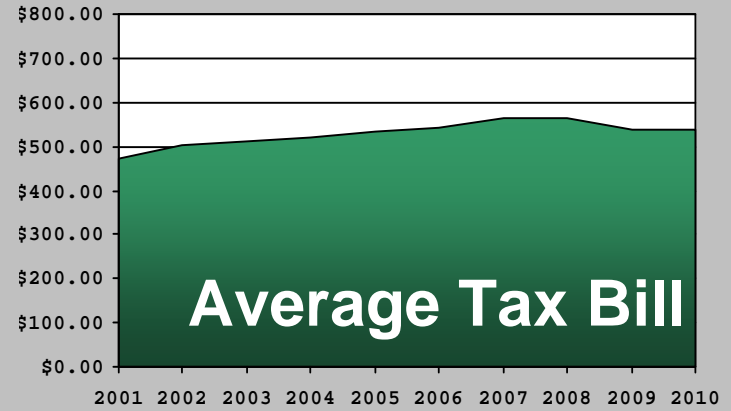
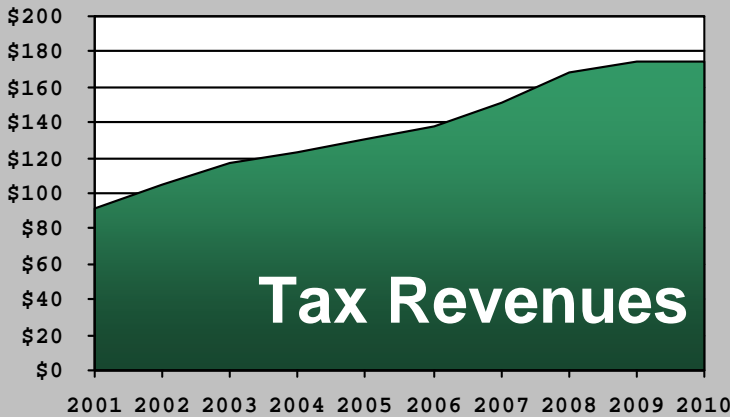
# Demographics



## Housing:

- 94% occupancy rate
- 70% owner-occupied
- 73% single-unit dwellings
- 65% of all housing built in 1990 or later
- Since 2000, householders age 65 and older have increased by 76%
- Foreclosures (YTD):
  - 7,503
  - 3.6% of county's single family dwellings

# Property Taxes



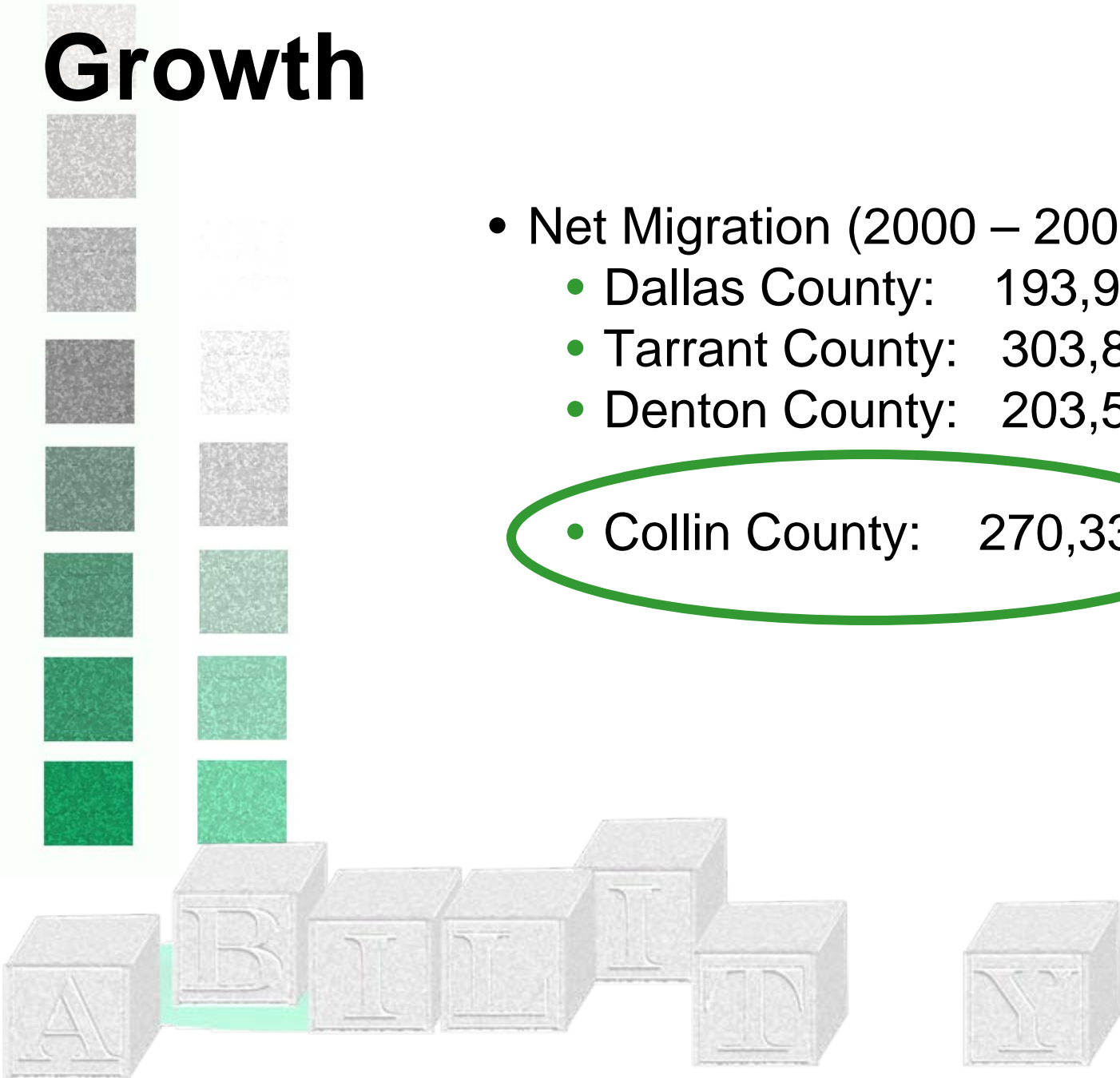
# Growth



- Fastest growing county in Texas (since 2000)
  - 55% growth rate
  - About 85 new people per day
  - 2007-2008 growth rate: 4.3%
- The 6<sup>th</sup> most populous county in Texas
- 8 of 10 fastest growing cities by percentage in Texas are in Collin
- 4 of 10 fastest growing cities by people in Texas are in Collin

# Growth

- Net Migration (2000 – 2008)
  - Dallas County: 193,928
  - Tarrant County: 303,872
  - Denton County: 203,581
  - Collin County: 270,335

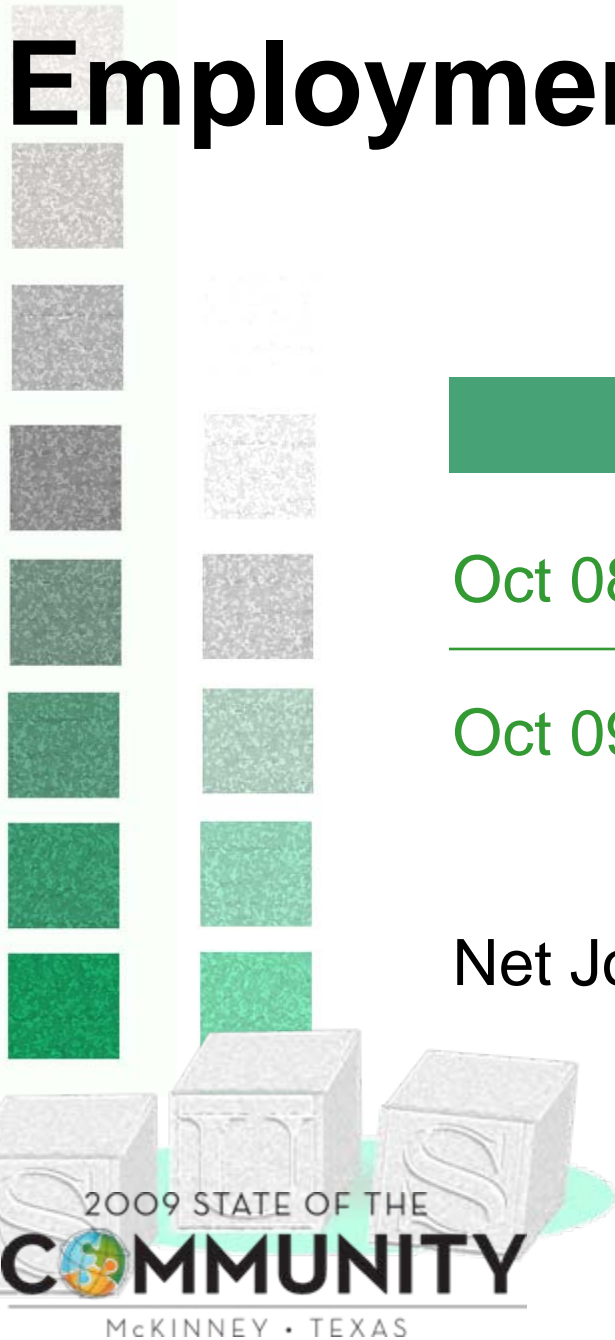


# Employment

## Current Unemployment Rates

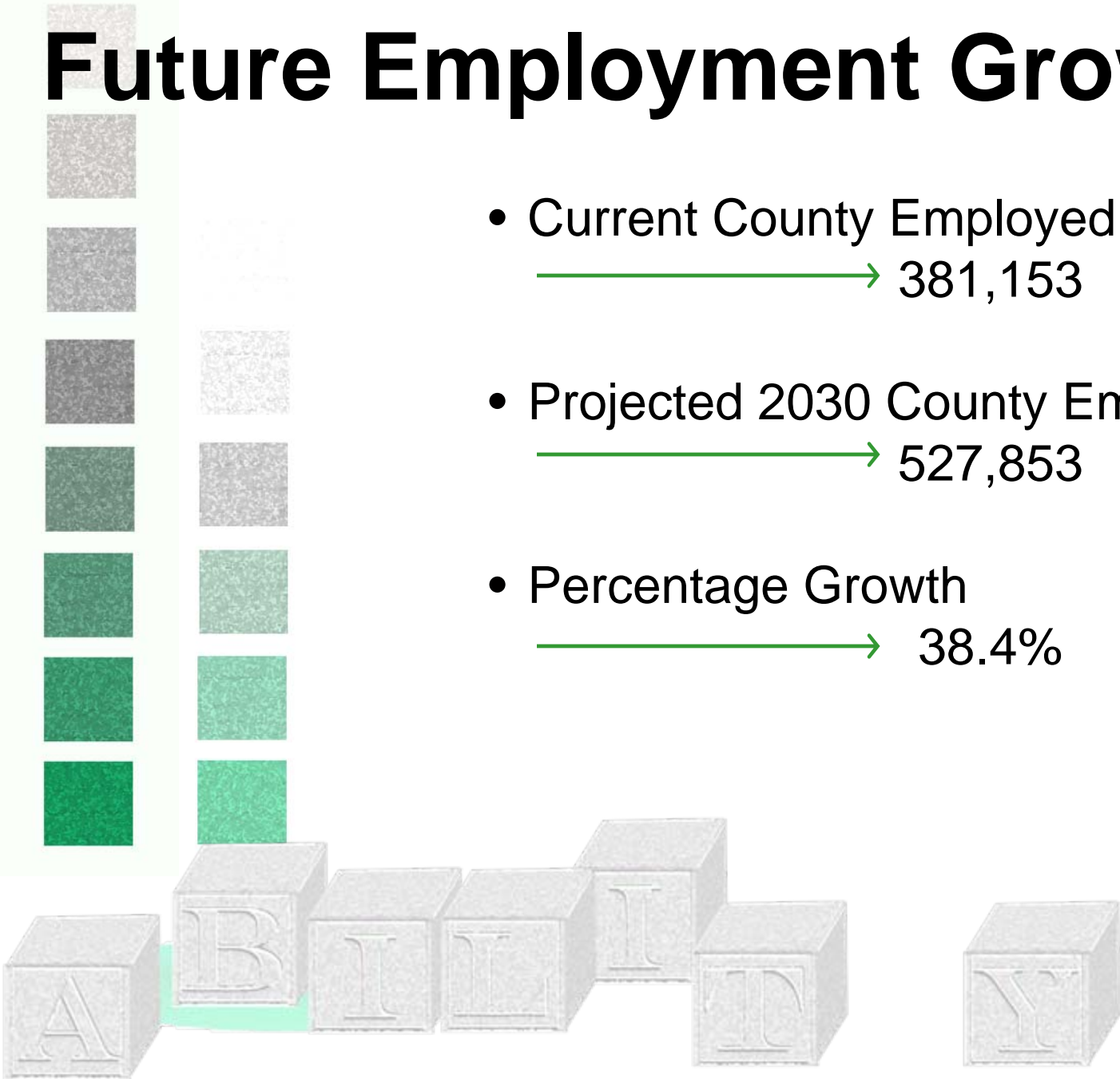
	County	State	National
Oct 08	5.0%	5.4%	6.5%
Oct 09	7.7%	8.1%	10.2%

Net Jobs added since 2007: 3,529  
(0.9% increase)



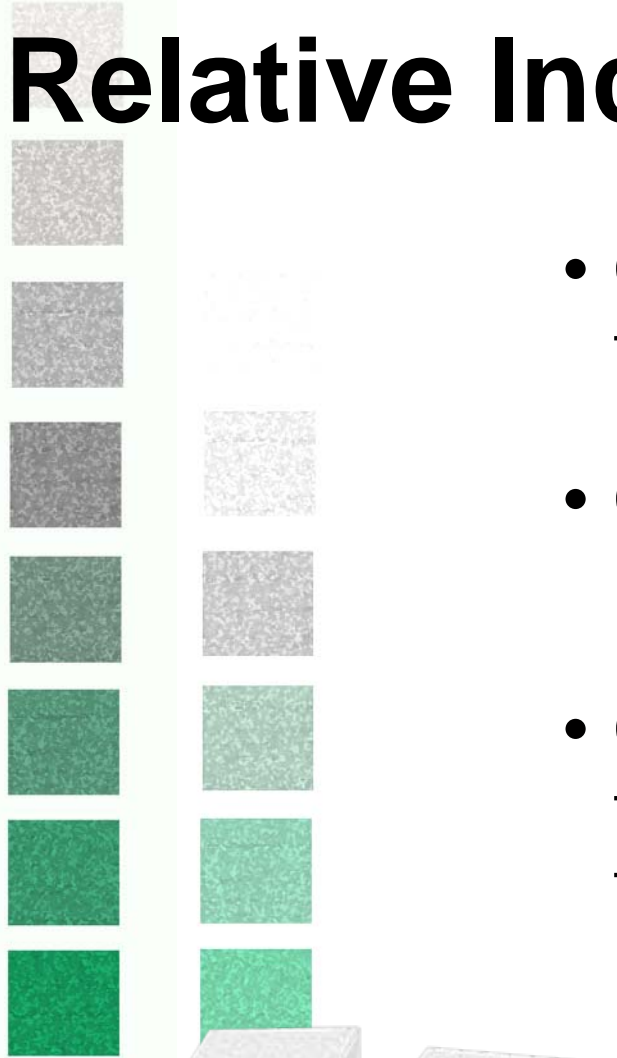
# Future Employment Growth

- Current County Employed Labor Force  
→ 381,153
- Projected 2030 County Employment  
→ 527,853
- Percentage Growth  
→ 38.4%



# Relative Incomes

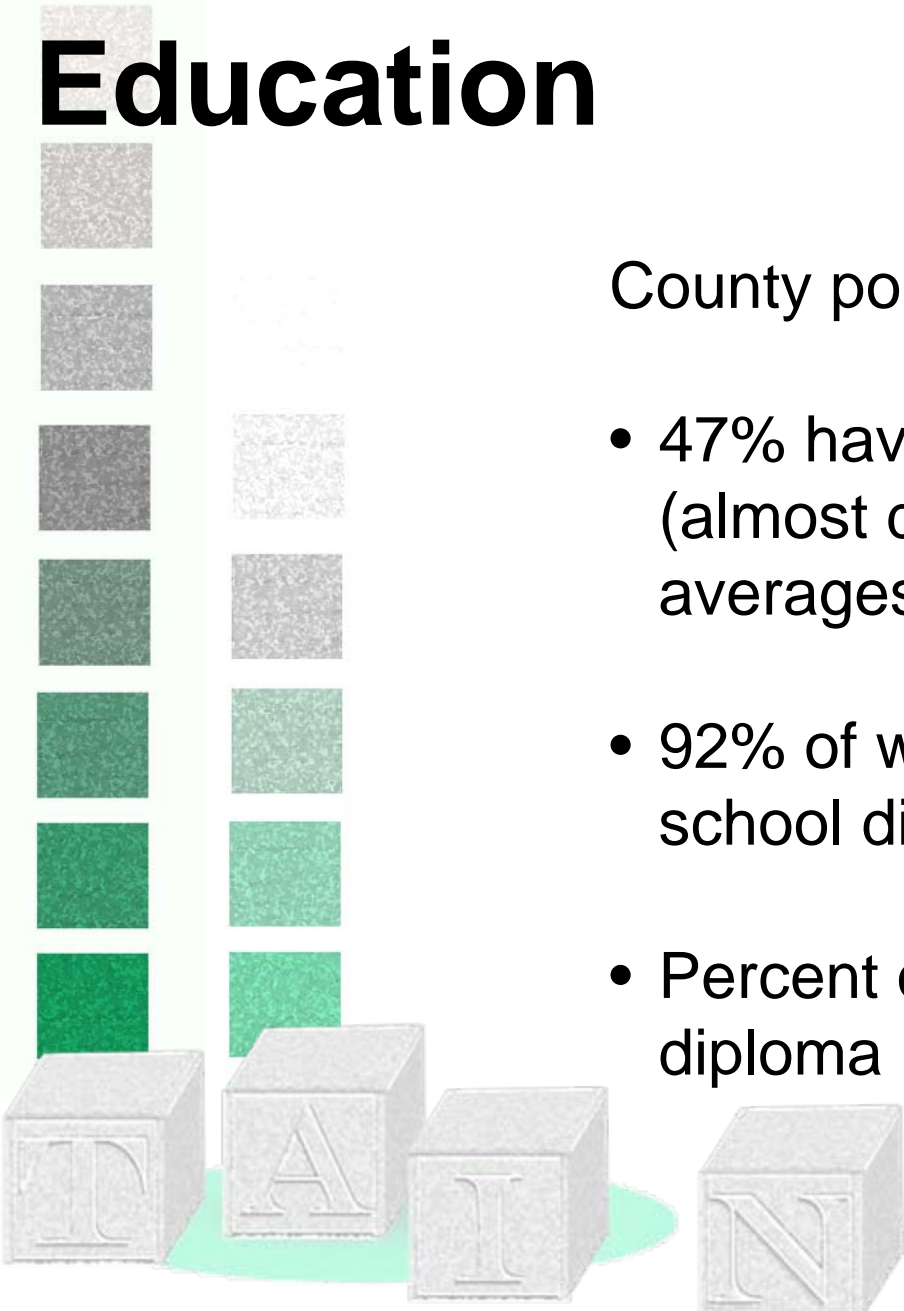
- County per capita income \$9k higher than the national average
- County family income \$32k over the national average
- County residents in poverty almost half the national average and less than half the Texas average



# Education

County population 25 years and older:

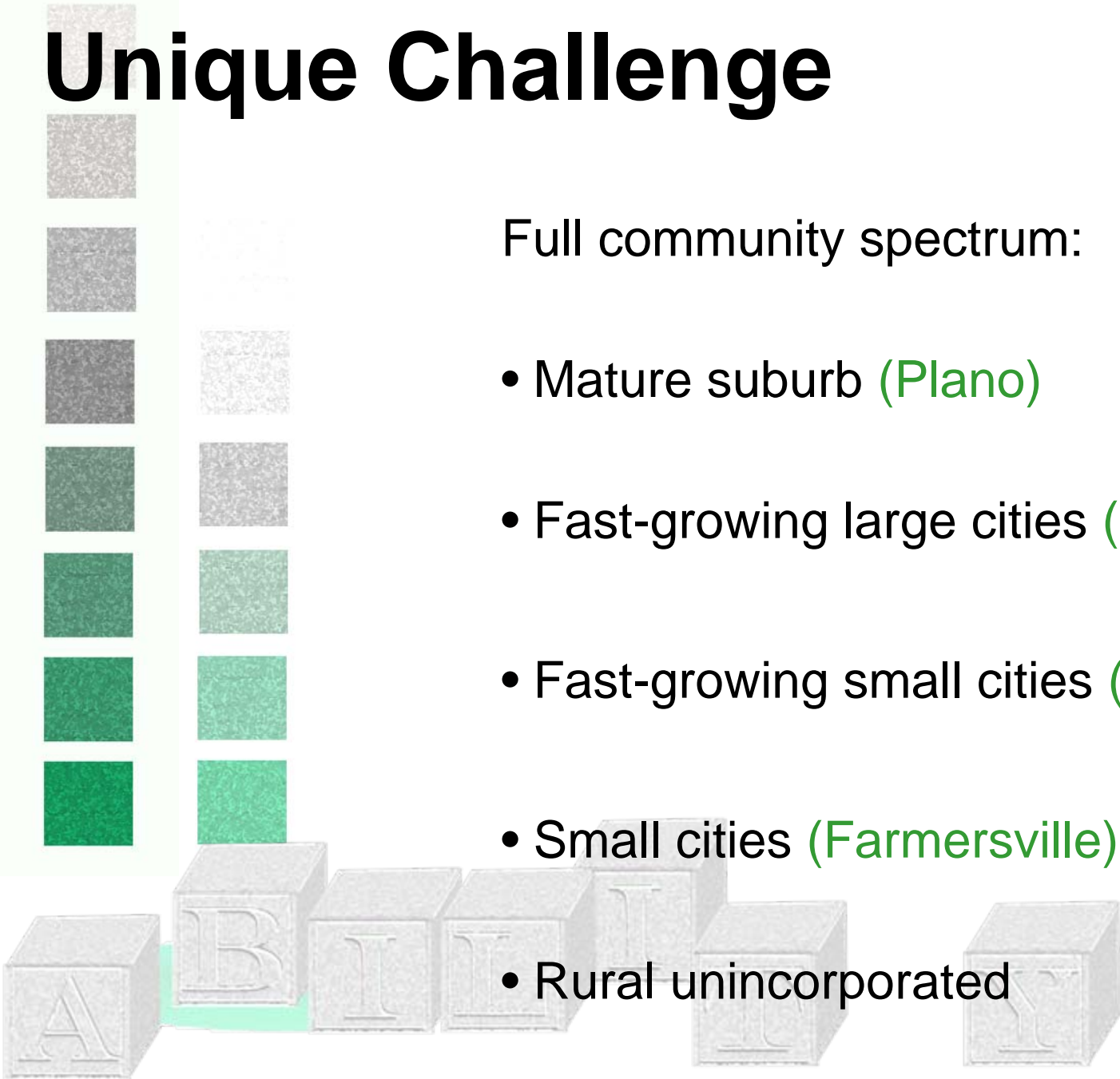
- 47% have a bachelors degree or higher (almost double Texas and national averages)
- 92% of workers have at least a high school diploma
- Percent of workers without a high school diploma less than half Texas average



# Unique Challenge

Full community spectrum:

- Mature suburb (Plano)
- Fast-growing large cities (Frisco/McKinney)
- Fast-growing small cities (Wylie, Prosper)
- Small cities (Farmersville)
- Rural unincorporated



# Relative Stability

Comparatively speaking:

- High employment rate (vs. state and U.S.)
- Low housing costs (vs. U.S.)
- Above average income (vs. state and U.S.)
- Consistent economic development (vs. state and U.S.)
- Safe streets (vs. state and U.S.)



# Relative Stability

## Impact of Economic Downturn

- Slowed growth
  - But still attractive relative to other states that are worse off
- Increased unemployment
  - But our unemployment still trails the state and national rates
- Local fiscal policy and taxes
  - Make even more of a difference during a downturn than during boom times



# Relative Stability

One example of our economic strength:

- Cumulative property tax collections through Sept 08: \$171.5 million

(101.19% of original 2008 tax levy)

- Cumulative property tax collections through Sept 09: \$175.7 million

(103.46% of 2008 levy)



# Relative Stability

In 2010 budget:

- Held tax rate steady
- Passed a balanced budget (revenue/expenditures)
- Paid down more unfunded future liabilities
- Positioned the county for another tough budget year in FY2011 with strong fund balances
- Did not cut any services



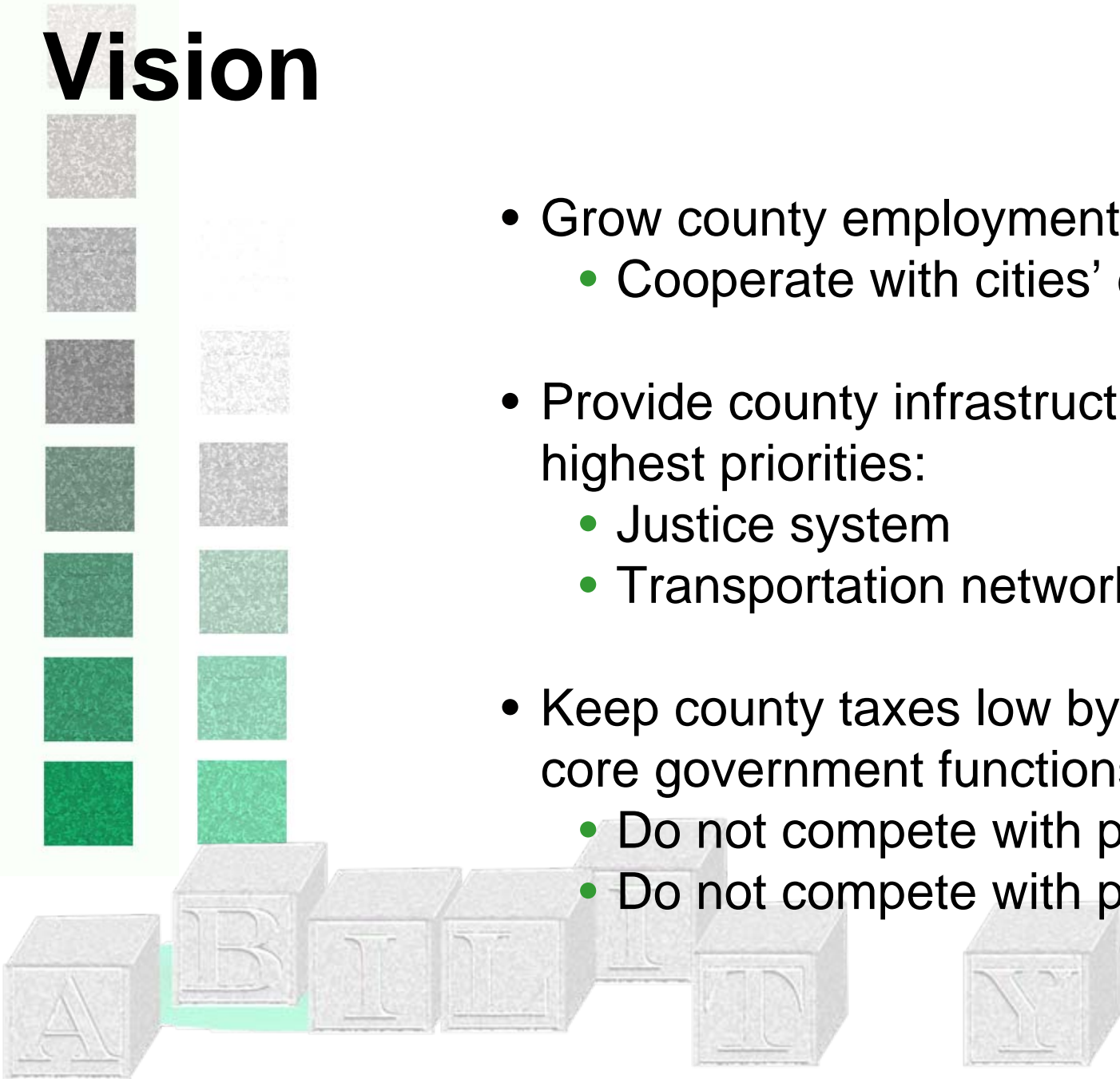
# Summary

A thriving, well-balanced, well-educated,  
well-employed and growing community



# Vision

- Grow county employment by 93%
  - Cooperate with cities' efforts
- Provide county infrastructure, including as highest priorities:
  - Justice system
  - Transportation network
- Keep county taxes low by focusing on core government functions
  - Do not compete with private business
  - Do not compete with private charity



# COLLIN COUNTY

## Still First in Growth

2009 STATE OF THE  
**C** **COMMUNITY**  
McKINNEY • TEXAS

Presented by:  
**Keith Self**  
County Judge

SUSTAINABILITY